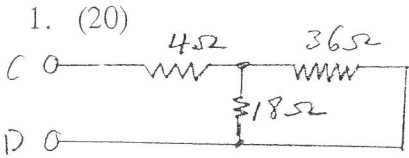
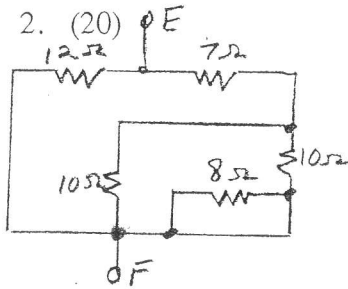


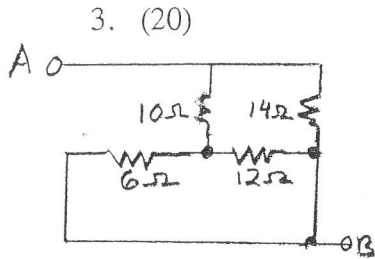
HINT: All the answers are integers.



$R_{CD} = \underline{\hspace{2cm}}$

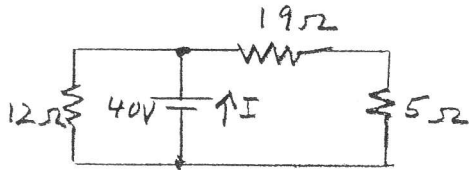


$R_{EF} = \underline{\hspace{2cm}}$



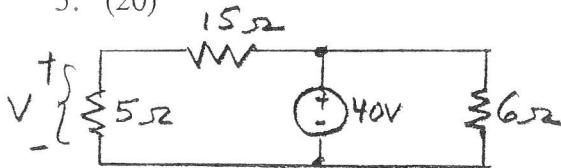
$R_{AD} = \underline{\hspace{2cm}}$

4. (20)



Use network reduction (combining resistors in series and parallel) to find I.

5. (20)



Use the voltage divider formula to find V.